

# ACS-55T

## Compact Two-Way Ceiling Speaker

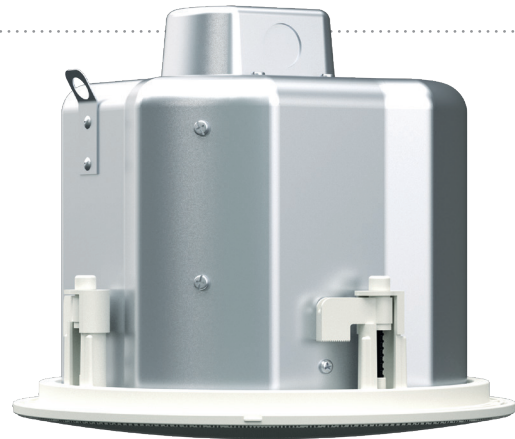
# ADORN

### Features

- High performance two-way ceiling speaker
- 5.25" (100mm) LF driver and 0.75" (19mm) HF dome tweeter
- Wide 150° conical coverage pattern reduces speaker count required for even coverage
- 70V/100V multitap line transformer or 16 ohm low-impedance operation
- Low and high-frequency overload protection
- UL94V-0 rated baffle with zinc-plated steel backcan
- Quick release, bezel-less grille
- Tile rails and C-ring included
- 5-year warranty

### Applications

- Retail outlets
- Cafes, bars and restaurants
- Museums and Houses of Worship
- Hotels, casinos and concourses
- Transportation facilities
- Boardrooms and reception areas



As part of the ADORN commercial series, the ACS-55T is a compact, two-way ceiling speaker designed for background and foreground applications that require premium performance and cost competitiveness. It brings full-frequency response, consistent coverage and intelligibility to a wide range of architectural environments — from hotels and concourses to retail outlets, bars and restaurants.

Comprising a 5.25" (100mm) LF driver and a 0.75" (19mm) silk-dome tweeter, the CS-55T produces 113dB peak output at 1 metre and has a high-fidelity sonic character ideal for both music and speech reproduction. Its ported bass reflex design and backcan with generous internal volume maximises low frequency output and delivers strong bass that extends down to 62Hz.

The wide 150° conical coverage of the ACS-55T reduces the number of speakers required for even coverage — leading to a reduction in installation cost.

It incorporates a high-quality transformer for 70V/100V line operation, with transformer taps selected by a rotary switch accessible behind the powder-coated, perforated steel grille. The switch also provides for 16-ohm low impedance operation — enabling four or more speakers to be driven in parallel from a single amplifier channel. For full-bandwidth protection, the low and high-frequency sections are individually protected against overload by auto-resetting thermal fuses.

The grille is bezel-less for a clean look, its bayonet fitting is easy to remove without the use of tools and finished in white (RAL9016) to match ADORN on-wall loudspeakers and may also be painted to blend with any décor.

Martin Audio Ltd  
Century Point, Halifax Road, High Wycombe  
Buckinghamshire HP12 3SL, England

Telephone: +44 (0) 1494 535 312  
Facsimile: +44 (0) 1494 438 669  
Email: [info@martin-audio.com](mailto:info@martin-audio.com)

All information is Copyright © 2020 Martin Audio Ltd.



[www.martin-audio.com](http://www.martin-audio.com)

# ACS-55T

## Compact Two-Way Ceiling Speaker

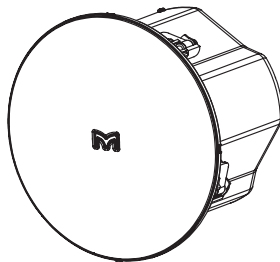
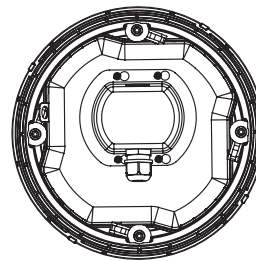
**ADORN**

### Technical Specifications

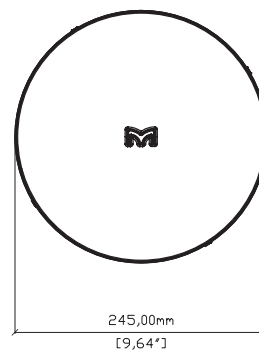
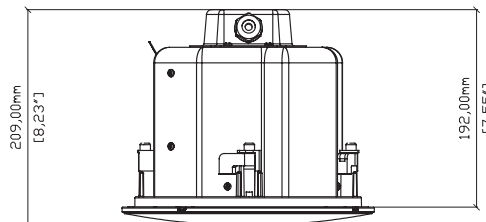
TYPE	Compact, passive two-way ceiling speaker, ported bass reflex
FREQUENCY RESPONSE (1)	98Hz-20kHz ± 3dB -10dB @ 62Hz
DRIVERS	LF: 5.25" /1" high-temp voice coil, coated paper cone, rubber surround, ferrite motor, pressed steel chassis HF: 0.75" silk dome, neodymium motor
RATED POWER (2)	50W AES, 200W peak
RECOMMENDED AMPLIFIER	VIA2004 (for low-impedance operation)
SENSITIVITY (4)	90dB / 1W(4V) / 1m
MAXIMUM SPL (9)	113dB peak
NOMINAL IMPEDANCE	16 ohms
DISPERSION (-6dB)	150° conical up to 7kHz
CROSSOVER	3kHz passive (LF and HF auto-resetting fuses)
TRANSFORMER TAPS	70V: 30w / 15w / 7.5w / 3.75w 100V: 30w / 15w / 7.5w
RECOMMENDED HIGH-PASS FILTER	65Hz 24dB/oct
ENCLOSURE	UL 94V-0 rated ABS baffle with steel backcan
FINISH	Baffle and grille: RAL9016 white Backcan: zinc plated
GRILLE	Perforated steel, powder-coated, bayonet fitting
CONNECTORS	Ceramic connector (in and link) located behind fire-retardant steel cover
ACCESSORIES (included)	2 tile rails C-ring backing plate Cut-out template
DIMENSIONS	(OD) 245mm x (D) Back Can 192mm, (D) Inc. Grille 209mm (OD) 9.7in x (D) Back Can 7.55in, (D) Inc. Grille 8.23in
WEIGHT	3kg (6.6lbs)

**Notes**

- (1) Measured on-axis in half (2pi) space at 2 metres, then referred to 1 metre.
- (2) AES Standard ANSI S4.26-1984.
- (3) Measured in half (2pi) space at 2 metres with 1 watt input, using band limited pink noise, then referred to 1 metre.
- (4) Measured in half (2pi) space at 2 metres using band limited pink noise, then referred to 1 metre.
- (5) Measured on-axis in open (4pi) space at 2 metres, then referred to 1 metre.
- (6) Measured in open (4pi) space at 2 metres with 1 watt input, using band limited pink noise, then referred to 1 metre.
- (7) Measured in open (4pi) space at 2 metres using band limited pink noise, then referred to 1 metre.
- (8) Measured in open (4pi) space at 2 metres with 2.83v input, using band limited pink noise, then referred to 1 metre.
- (9) Calculated at 1 metre.
- (10) Measured in half (2pi) space at 2 metres with 2.83V input, using band limited pink noise, then referred to 1 metre.



ACS-55T



Martin Audio Ltd  
Century Point, Halifax Road, High Wycombe  
Buckinghamshire HP12 3SL, England

Telephone: +44 (0) 1494 535 312  
Facsimile: +44 (0) 1494 438 669  
Email: [info@martin-audio.com](mailto:info@martin-audio.com)

