

KRX402

Medium format, multi-use powered system with 12" coaxial speakers



DESCRIPTION

By combining the KX12 with active K-array subwoofers, three portable systems are created, which differ in size of the subwoofers and number of KX12 units used.

With powered subwoofers that maintain the same digital editing features of all K-array active subwoofers, the KRX systems feature an integrated touch screen, providing intuitive control over the main DSP functions, such as input/output levels, signal routing, offset delays for subwoofer and mid-high speaker output (up to 12 ms each) and overall system delays (up to 330 ms). All DSP functions, including EQ, can also be controlled remotely via software through USB or RS485 (3 pin XLR). With the K-dante accessory, the systems can be used in a Dante network. The KRX402 is the middle range system that delivers more pressure and a more extended bass response than the smaller KRX202. The stereo system is comprised of two KX12 speakers paired with one 21" KMT21 subwoofer by means of an extendable pole and proper joining and stacking hardware per side.

Possible applications are DJ use, clubs and anywhere a lot of pressure is needed close to the speakers.

FEATURES

- Unique performance-to-size ratio
- Asymmetrical horizontal and vertical coverage
- Stainless steel chassis
- Electronically protected

COLORS AVAILABLE

BLACK



SPECIFIC RAL CODE FOR A CUSTOMIZED PAINTED MODEL



ACCESSORIES

- K-DANTE, K-USB, K-FLY22, K-JOINT2B, K-FLY2B, K-WALL2, K-KCLAMP/S, K-KCLAMP, K-AMPCOVER, K-SPK235, K-WIRE2, K-WIRE15

APPLICATIONS

Broadcast/ TV Studio

Club/ DJ Set

Corporate/AV

Hospitality

House of Worship

Large Congregations

Live Concerts

Store

Theatre

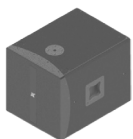
Theme Park



DATASHEET

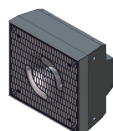
Portable System KRX402

SYSTEM COMPONENTS



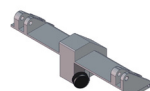
KMT18

2x



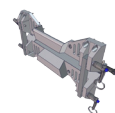
KY102

2x



K-FLY22

4x



K-JOINT2B

2x



Extendable pole

KX12

ACOUSTICS

Power handling	800 + 200 W
Impedance	8Ω
Frequency range	120 Hz - 19 KHz ⁽¹⁾
Maximum SPL	127 dB (cont.) - 133 dB (peak) ⁽²⁾

COVERAGE

Horizontal	100°/30° (depending on horn orientation)
Vertical	100°/30° (depending on horn orientation)

POWER AUDIO INPUT/OUTPUT

Connectors	2 x 4-pin Speakon
Wiring	1+ 1- (Signal IN & LINK) 2+ 2- (Through)

TRANSDUCERS

Coaxial	1 x 12" Neodymium magnet woofer with 3" voice coil 1 x Neodymium magnet compression driver with 2" voice coil
---------	--

RECOMMENDED AMPLIFIERS

Type	KMT18, KMT21, KMT218, KA84
------	----------------------------

PHYSICAL

Dimensions	34.0 x 32.0 x 20.0 cm (13.4" x 12.6" x 7.9")
Weight	12.2 kg (26.9 lbs)

Notes for data
1. With dedicated preset;
2. Measured with musical signal

New materials and design are introduced into existing products without previous notice. Present systems may differ in some respects from those presented in this catalogue.

KMT21

ACOUSTICS

Power handling	1600 W ^(AES)
Frequency range	30Hz - 150 Hz +/- 3dB (preset relating)
Impedance	4Ω
Maximum SPL	132 dB continuous - 138 dB peak

COVERAGE

Horizontal	Omni
Vertical	Omni

CROSSOVER

Type	DSP controlled
Frequency	150 Hz maximum (preset dependent)

TRANSDUCERS

Full-range	1 x 21" Neodymium speakers with 3" voice coil
------------	---

AMPLIFIERS

Type	1 modules class D - DSP controlled
Power	2x 2000 Watt ¹ @4Ω
Protection	Dynamic limiter, over current, over temp, short circuits

PHYSICAL

Dimensions	55.5 x 55.5 x 77.7 cm (21.85" x 21.85" x 30.59")
Weight	49 Kg (108.03 lbs)

Notes for data
1. Amplifier wattage rating is based on the maximum undistorted sine wave RMS voltage that the amplifier will produce into the nominal load impedance. New materials and design are introduced into existing products without previous notice. Present systems may differ in some respects from those presented in this catalogue.

